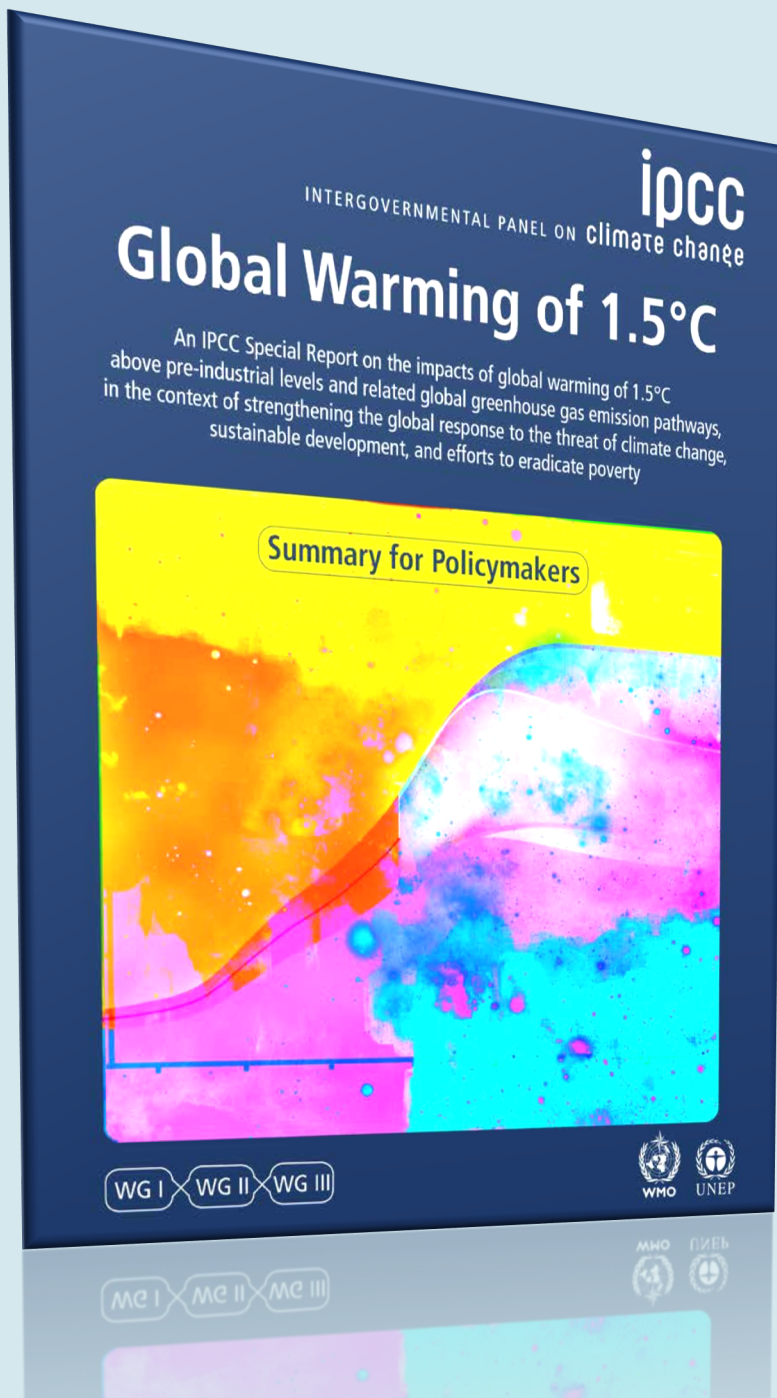




Welcome to Cape Ann Climate Crisis Action Meeting

September 25 2019



To avoid a climate change apocalypse, carbon dioxide emissions need to fall by as much as 45% from 2010 levels by 2030, according to the U.N. Intergovernmental Panel on Climate Change.

**Limit warming
to 1.5°C**



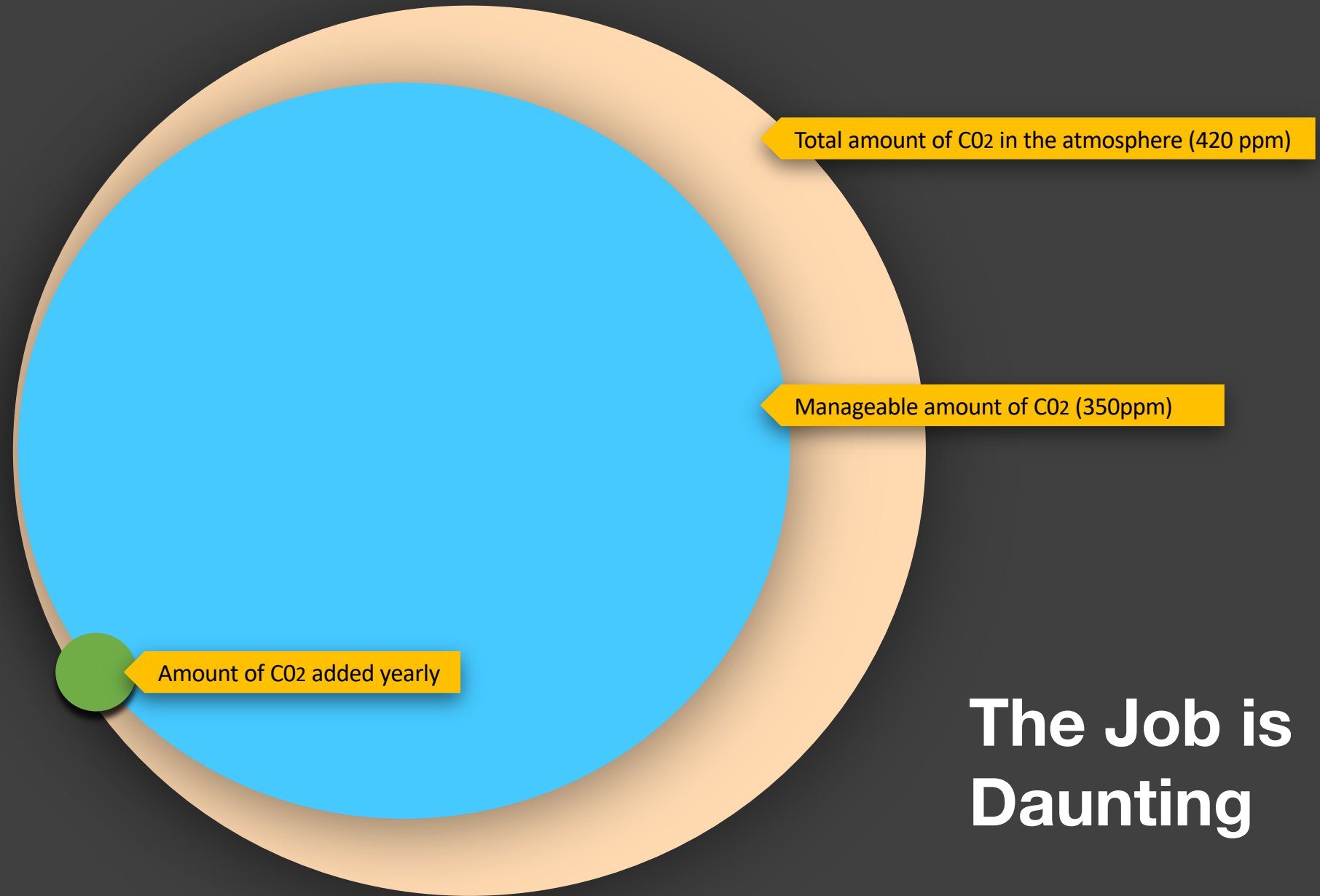
1.5°C

We are not on track...

**Powerful
Opposition.**

**US set to open nearly 200 fossil fuel
power plants as Earth faces climate
catastrophe.**

**Fossil fuel companies could lose \$2.2
Trillion by 2030 if countries get serious
about carbon cuts.**



**The Job is
Daunting**

Climate change: Why 1.5 is the new magic number.



1.5°C

2°C

2°C = Certain Climate
Planetary Catastrophe.

- World food security
- Rising sea level
- Runaway feedback loops
(runaway carbon dynamic
IPCC).

**THE GREATEST THREAT
TO OUR PLANET IS THE
BELIEF THAT SOMEONE
ELSE WILL SAVE IT.**

Robert Swan

**Greater World
Ambition is
Needed.**

We can still fight climate change, but we're locked into a difficult scenario. Every country, city, private sector, individuals — will need to strengthen their action, without delay.

Goals

- Make connections/network with others
- Generate Bold ideas For Cape Ann
- Encourage Individuals and groups to collaborate for effective action

Roles

Committee: Planning and follow-through

All: Lean in. Participate

Jane: Design and facilitation

Agenda

Opening Remarks

Large Group Mixer

Teaming Activity

Dialogue Sessions

Bold Ideas Review

Discussion

Closing Remarks

9:00 ADJOURN

Please....

1. On an index card please record *or draw* your “special place” on Cape Ann.
2. Consider (do not record) “how may climate change impact this special place?”
3. Find a partner, share your card and the impact climate change may have. Partner does the same.
4. Keep your card...but find new partner. Repeat until time called.

Civic Action & Rapid Teaming

..... Important when the situation is complex, uncertain, and involves rapid change.

....Required when teams need to form quickly and work effectively together.

(Amy Edmundson, *Teaming on the Fly*)

Rapid Teaming

Requires these behaviors...

- Speaking Up
- Experimenting: an iterative approach
- Listening Intently
- Integrating: synthesizing different views to create new possibilities

Amy Edmonson, *Teamwork on the Fly*, HBR April 2012

Activity

Please merge with ONE other table...pull your chairs up!

You have 2 tasks:

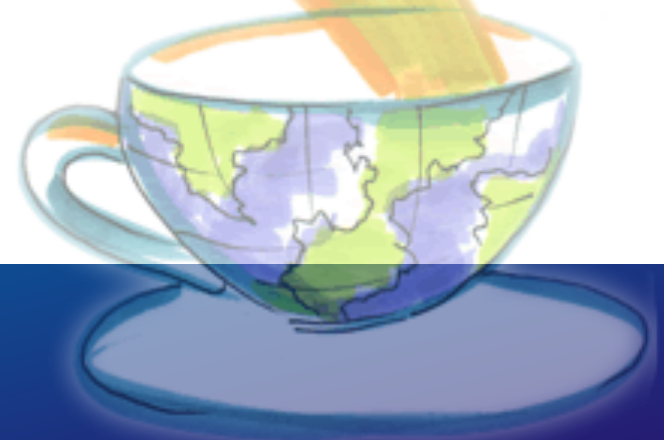
- Learn each other's names
- Find something that you *all* have in common... that you cannot see! **AND that is unique.** (And real!)

Rapid Teaming Behaviors

- Speaking Up
 - Experimenting: an iterative approach
 - Listening intently
 - Integrating: synthesizing facts and different views to create new possibilities
1. Which of these did your group do well...and how?
 2. How can these behaviors assist tonight and going forward as we consider working collaboratively together on the issue of climate change here on Cape Ann?

Welcome to the World Café

Cape Ann Climate Meeting
September 25, 2019



What is the World Café?

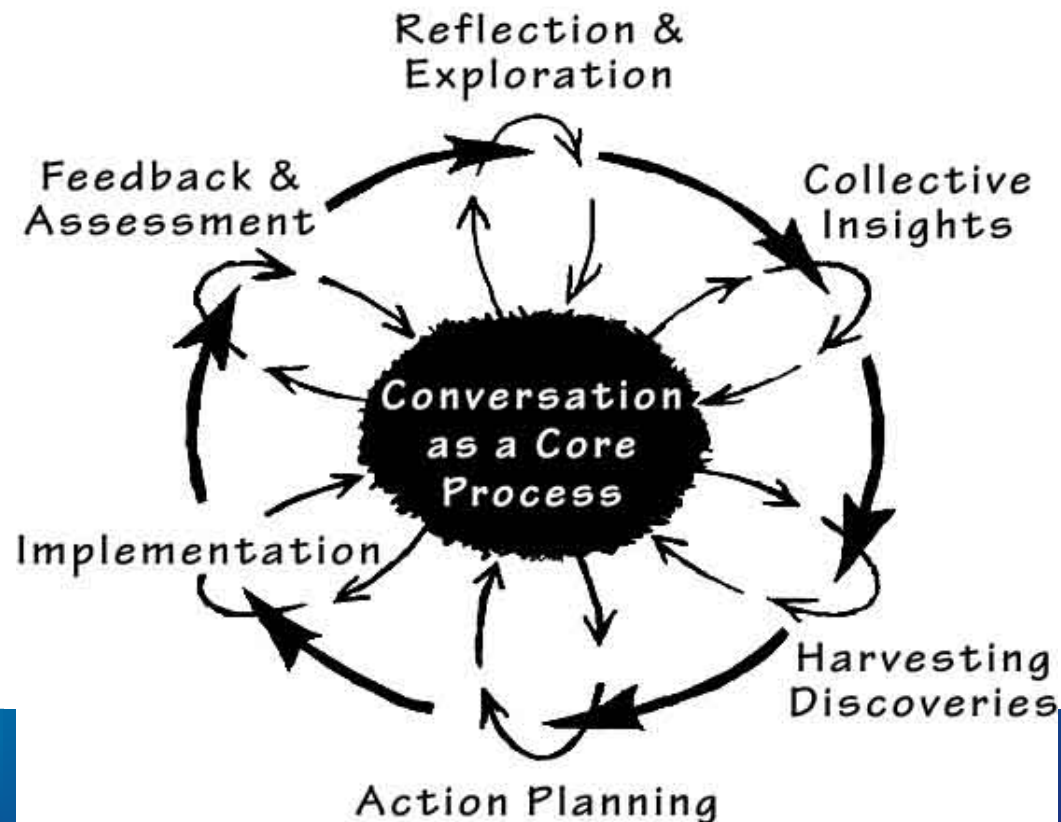
The World Café is a simple yet powerful method of conversation for large and small groups of people to:

- foster collaborative dialogue
- share wisdom of the group
 - create new knowledge
 - build community
- inspire collective action

TRADITIONAL VIEW



EMERGING VIEW



World Cafe Assumptions

Outcomes are better when they are informed by:

- Diversity of Perspectives
- Cross Pollination of Ideas
- Attention to Meta Level Themes & Patterns
- Questions that Matter to People

And...We have the Capacity, Creativity and Wisdom
to Address our most Challenging Issues!

Connection + Conversation bring Intelligence to Life!

CAFÉ ETIQUETTE

Listen to understand

Focus on what matters

Contribute your thinking

Speak your mind and heart

Link and connect ideas

Listen together for insights and deeper questions

Doodle – on your tablecloths

Have Fun!

World Café Guidelines



How Does Today's Cafe Conversation Work?

- 2 Rounds of Conversation at 2 Different Tables
 - Different Question/Topic for Each Round
- 1 Round of Harvesting Collective Insight & Learning—
Bold Ideas – At your Original Table
- Gallery Walk and Large Group Discussion

Café Round 1:



Meet your table...*Say hello* 😊

Question #1:

What conversation, if begun now, could ripple out in a way that creates new possibilities for the future of climate change actions on Cape Ann?

5 Minutes

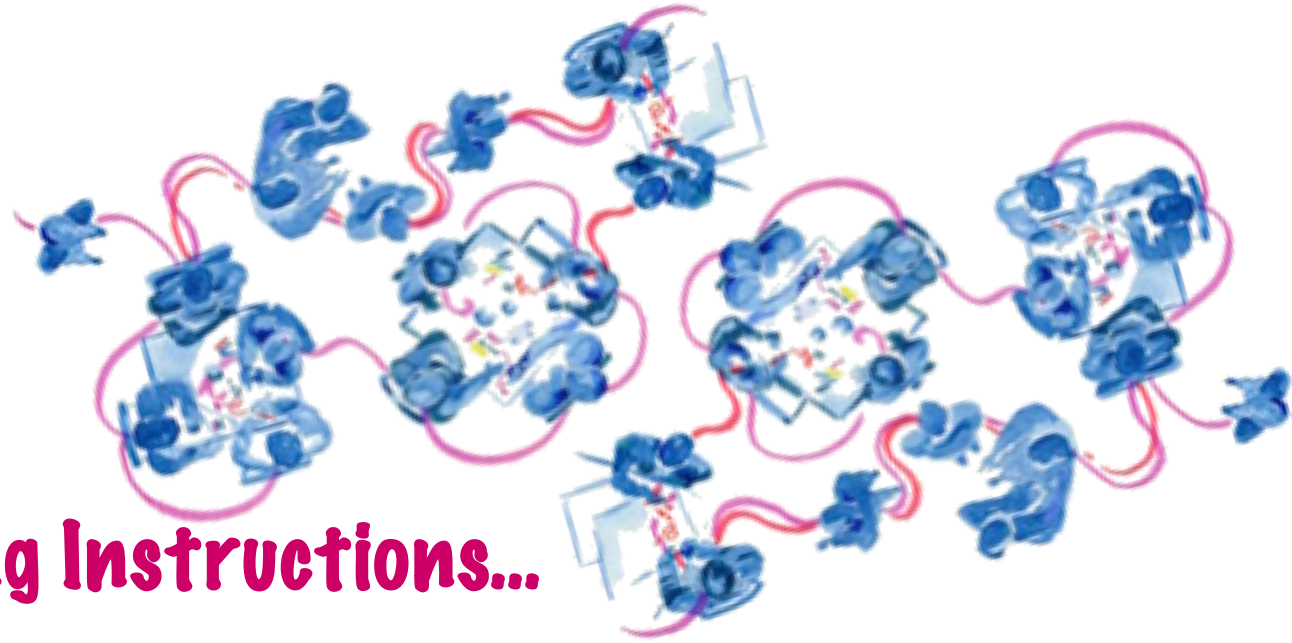


to Go...

2 Minutes



to Go...



Café Travelling Instructions...

- One person stays as table host
- Others move to different tables
- Host welcomes new people
- Wait for next question

Café Round 2:

Meet your table...*Say hello* 😊



Begin by sharing one insight or learning from your previous table conversation.

Question #2:

What assumptions and constraints do we need to test or challenge when thinking about making a difference on the issue of climate change here on Cape Ann?

5 Minutes

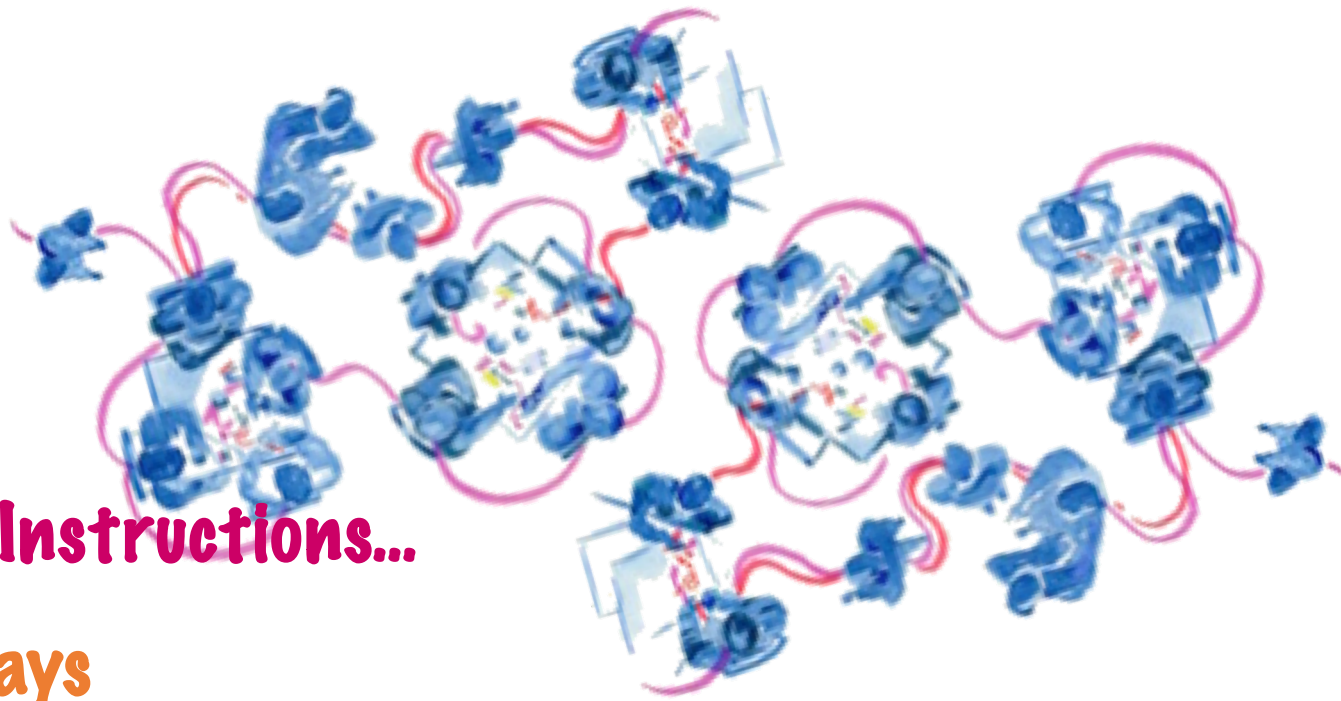


to Go...

2 Minutes

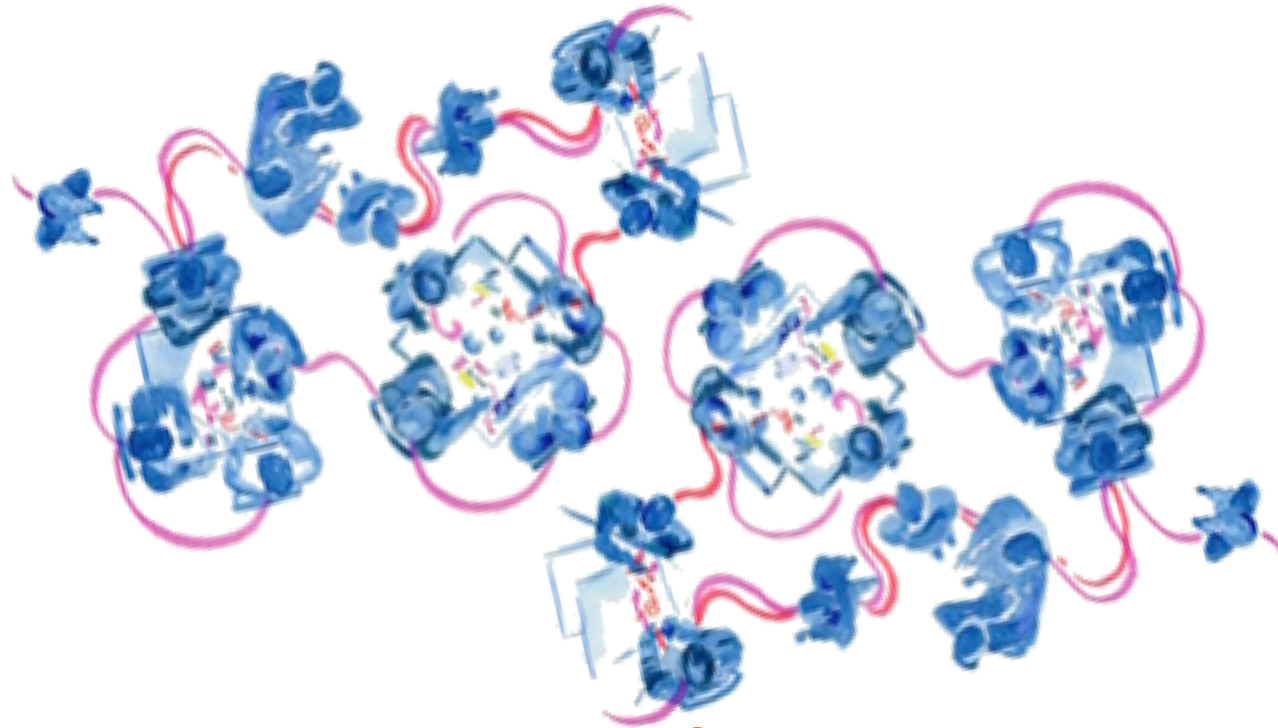


to Go...



Café Travelling Instructions...

- Table host stays
- Others move back to original tables
- Host welcomes team back
- Wait for next question/topic



Harvesting our Collective Wisdom

Themes, connections, insights...

New questions or ideas...

Café Round 3:



1) Share one nugget from your last round

2) Synthesize...

What themes, connections and insights are you seeing from your first two rounds?

3) Capture on clean paper....

If our success is highly likely, what bold steps might we choose?

5 Minutes



to Go...

2 Minutes



to Go...

Gallery Walk....

- *What struck you?*
- *Did we capture some bold steps that will be critical for building momentum here on Cape Ann?*

.....We will do large group reflections next

Before You Go...

Name/Organization:

Contact Information: xxxx.com 978-555-1234

Contribution You Can Make: *fnepfn ongnsngn sepong nge ngeorn*

Education: (Training, curriculum, sermons, PR, etc...)

Renewable Energy: (Fossil free energy ideas such as solar, wind, etc..)

Efficiency: (Electric vehicles, insulation, passive house, etc...)

Carbon Sequestration: (Seaweed and algae farms, eel grass and marsh restoration)

Policy, Planning and Vision: (New legislation, Green New Deal ideas, carbon tax, vision to go to **net zero** for Cape Ann)

Other: “Put me in coach”



The **Active Learning** Group
Inspiring Change. Unleashing Potential.